

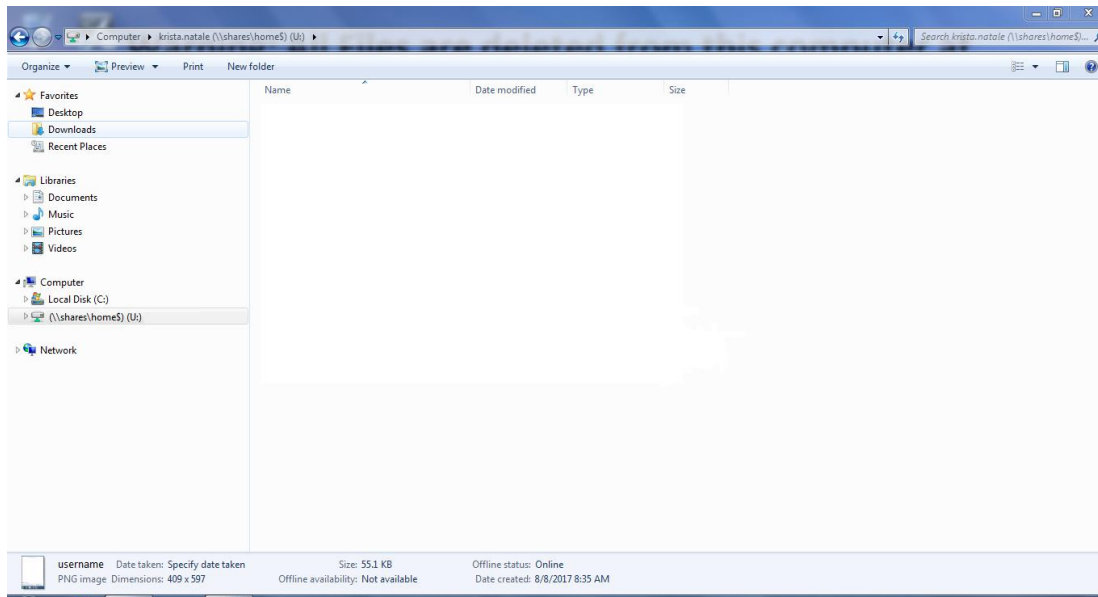
# Connecting to your U Drive in Windows:

## Step 1. Test your access

- Click your start button
- Type the path [\\shares\home\\$\yourmyRedDragonusername](#) & press enter.

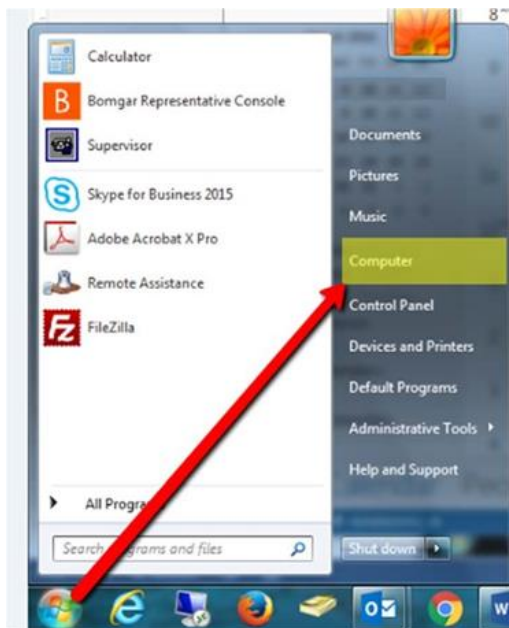


- Your SUNY Cortland U: Drive will open in an Explorer window

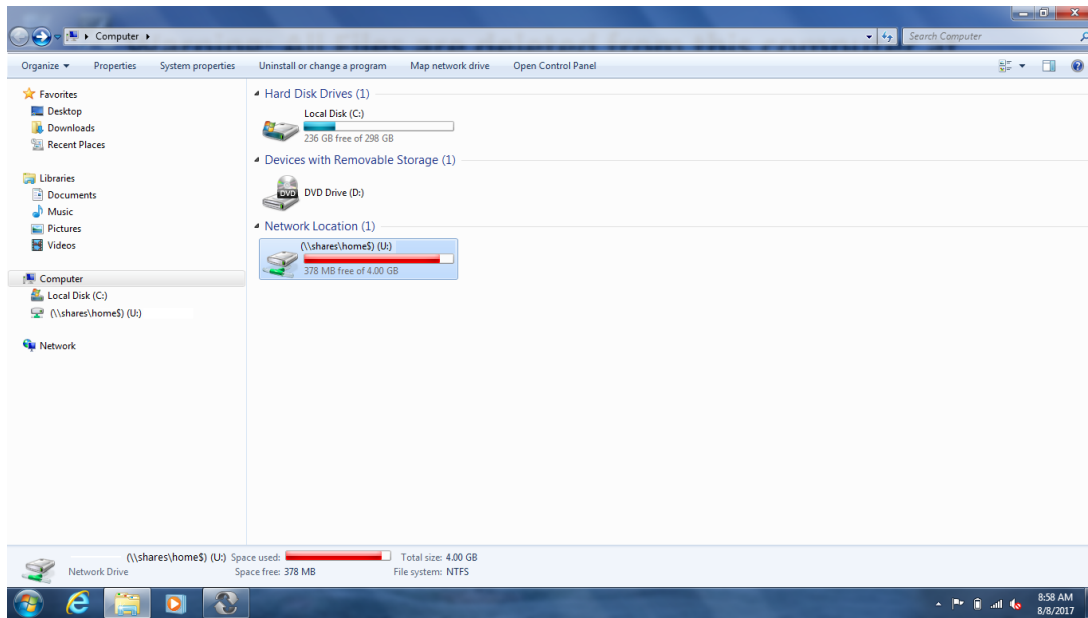


## Step 2. Create a shortcut for your desktop

- Click your start button
- Click Computer
- 



- Your U: Drive is visible in the Explorer Window



- Look in the Favorites pane on the left side of the Explorer window
- Single-click on username([\\shares\home\\$](#))(U:) and drag onto the desktop icon
- 

